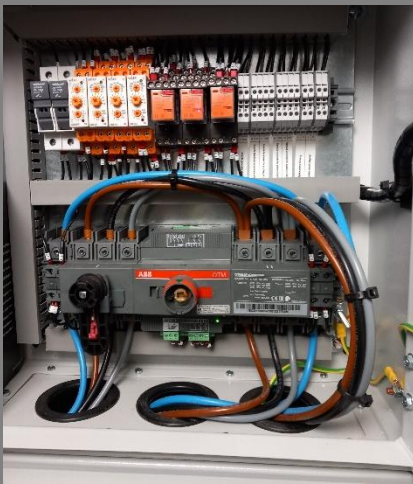


Education



Role: M&E Contractor

Client: University of Cambridge;
Department of Geography

Main Contractor: SDC

M & E Consultant: Roger Parker
Associates

M & E Value: £240K

University of Cambridge – Department of Geography New DDA Lift

For nearly 100 years the Department of Geography has been located on Downing Street, Cambridge. During this time, it has seen numerous changes including a major extension to the top floor in the 1980's. This latest project on site was particularly complex – the installation of a new 8 person DDA lift into an existing 1930's, 4 storey building. After thorough surveys, an opening large enough to accommodate the lift car and its associated systems was created through the various floors. The surrounding area of the lift shaft was extensively reconfigured to ensure it serves as an evacuation lift at each level. Additionally, the existing mechanical and electrical services around the area of the lift shaft on all floors had to be individually traced, relocated, diverted, extended or renewed, all while preserving the aesthetic integrity of the existing building.

A particular focus was given to the engineering of the fire alarm to accommodate new evacuation zones, as well as new refuge and DDA alarms, alongside a diverse route for the primary and secondary lift power supplies.

We worked closely with main contractor SDC on coordination and logistics to tackle the spatial challenges and move the project forward in a productive manner, which also involved relocating existing toilets and introducing gender-neutral WC cubicles and an accessible WC on the third floor.

For further information contact us:
Bower Fuller, 6 Bermuda Road, Ransomes Europark,
Ipswich, Suffolk, IP3 9RU

Bower Fuller, Blue Space SusCon, Brunel Way,
Dartford, Kent DA1 5FW

Telephone: 01473 272277
Web Site: www.bowerfuller.co.uk
Email : services@bowerfuller.co.uk